



ELIT FALS-KLEMØ8-10MM

Flange clamp V2A Ø8-10mm with M10 bolt

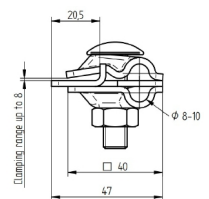
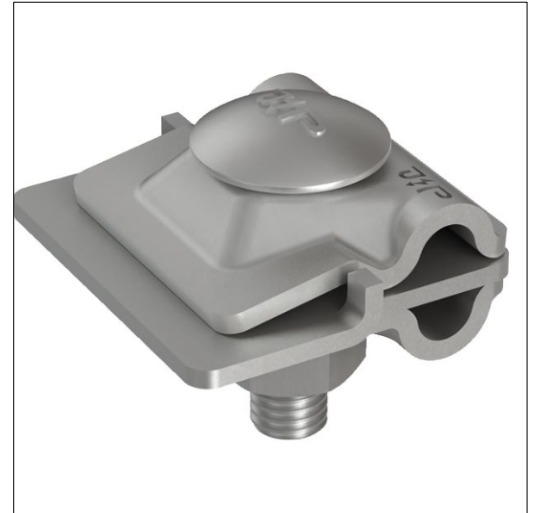
Crimping clamp with clamping range up to 8mm and for conductor Ø8-10mm

Technical description

Crimp terminal according to EN 62561-1 with intermediate plate for universal use as T-, cross-, parallel terminal, splice contact and sheet metal terminal. Crimp clamping range up to 8 mm. Crimp contact surface at least 10 cm². Crimp clamping range for conductors is Ø8 - 10 mm. Carriage bolt M10 with nut.

Advantages:

Only one clamp for all types of wire connections
Maximum contact thanks to even clamping
Extremely reduced installation time - only one M10 screw
Optimal handling during planning, procurement and storage



Product name/ Art.nr/ GTIN	ELIT FALS-KLEMØ8-10MM/ 40180033/ 7070810035366
According to:	EN 62561-1
Type of connector	Rebate clamp
Suitable for diameter round conductor	8 - 10 Millimetre
Clamping range	8 - 10 Millimetre
Mounting hole	10 Millimetre
Material	Stainless steel 304 (V2A)
Surface protection	Other
Type of fastening screws	Flat round screw